

A photograph of two surgeons in an operating room, wearing blue scrubs, masks, and hairnets. They are focused on a surgical procedure, with one surgeon holding surgical forceps. The scene is dimly lit, with a bright light source from above, creating a professional and clinical atmosphere.

WORK NW ALBERTA

GRANDE PRAIRIE-GREENVIEW CORRIDOR

HEALTH CARE AND LIFE SCIENCES SECTOR PROFILE



If you are organizing a talent attraction campaign, presentation or hiring event, we've got some assets to help you.

Email us at **info@worknwalberta.ca** for information on accessing our photo and video library, research findings and market data. We're here to help.

WORK NW ALBERTA

GRANDE PRAIRIE-GREENVIEW CORRIDOR

Work Northwest Alberta - representing the Grande Prairie Greenview corridor - is poised for unprecedented growth and opportunity. By 2031 our region will need over 4,000+ skilled employees across key sectors such as Energy, Healthcare, Agriculture, Education, Logistics, and Transportation (Lightcast Analyst) to support and expand our thriving economy. Recognized as a northern economic powerhouse, our area serves a trade market of 300,000 and plays a vital role in contributing to both national and international markets.

The sector profile project was led by Work NW Alberta, a collaborative effort between the City of Grande Prairie, County of Grande Prairie, Municipal District of Greenview, Grande Prairie & District Chamber of Commerce, and Northwestern Polytechnic.

We would like to thank everyone who contributed their feedback, ideas and expertise to the study.

Please note that every effort has been made to use the most current data available. The following sources of information are used in this profile:

- Manifold Data Mining Inc. 2023/2024
- Lightcast Analyst, Datarun 2024.3
- IBIS World 2024 Industry Profiles



County of
Grande Prairie No. 1
Alberta, Canada



Municipal District of
GREENVIEW

NORTHWESTERN
POLYTECHNIC 

Chamber of
Commerce 
GRANDE PRAIRIE & DISTRICT

INTRODUCTION

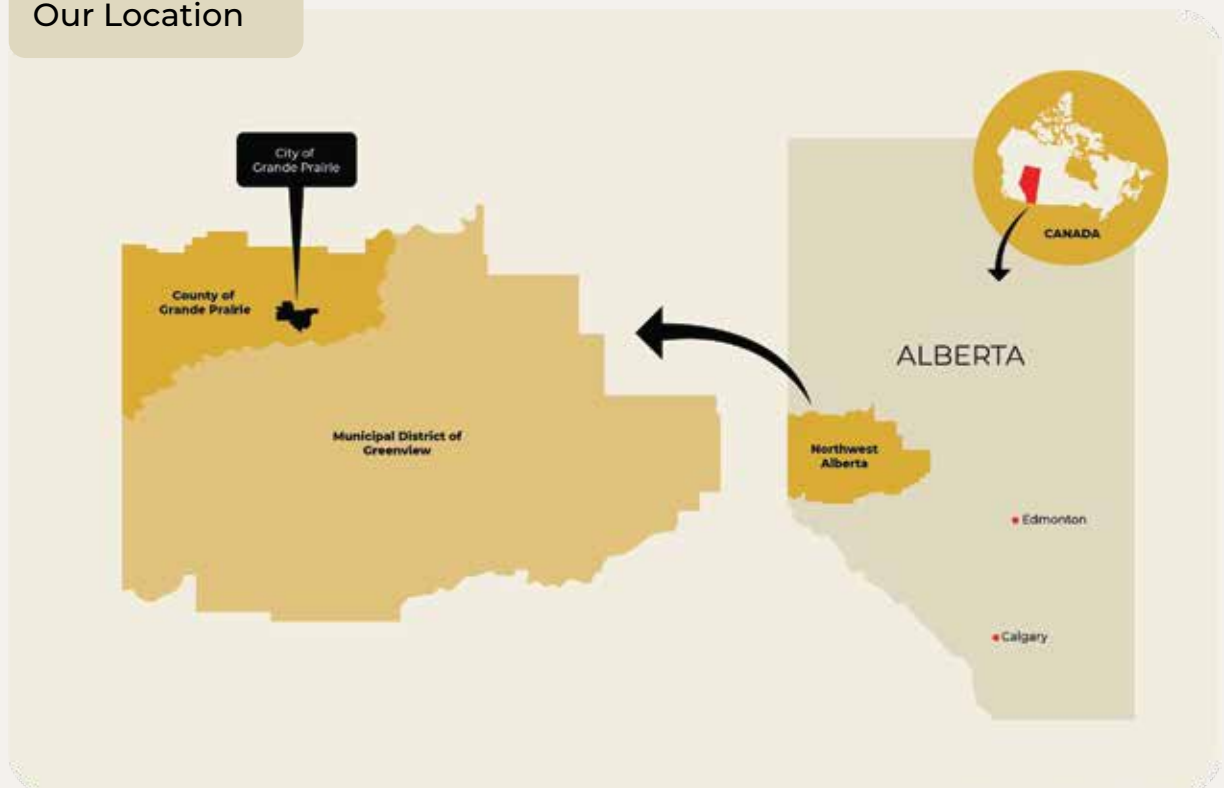
This profile offers comprehensive information about the health and life sciences industries in the Northwest Alberta Region. It serves as a valuable resource, providing detailed data on business size, sector outlook, and cluster assets within the region.

This sector profile focuses on the Region consisting of the City of Grande Prairie, County of Grande Prairie, Municipal District (MD) of Greenview, Town of Beaverlodge, Town of Sexsmith, Town of Wembley, Town of Fox Creek, Town of Valleyview, Greenview Co-ops and Enterprises, Sturgeon Lake Cree Nation, and Horse Lake First Nation. Any references to "Region" within this document refer to the custom region above.

The Region spans nearly 40,000 square kilometres and acts as a gateway and resource hub for northwestern Alberta. Its largest centre, the City of Grande Prairie, is located approximately 450 kilometres northwest of Edmonton. With a strong postsecondary institution, new hospital, skilled labour force, and significant business supports, opportunities abound within the Region.

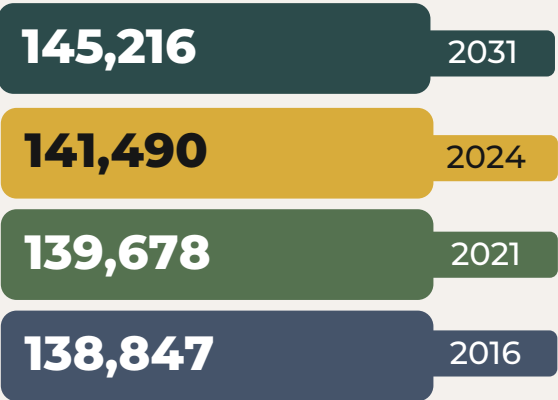
The health care and life sciences industry employed 2,407 individuals in 2024 across 242 business in the Region. Employment is expected to increase by 233 jobs or 10% by 2031. The majority of the Region's businesses within this sector are small enterprises as 35% of businesses with employees, employ fewer than four individuals.

Our Location



REGIONAL DEMOGRAPHIC BREAKDOWN

POPULATION OF REGION, 2024



Source: Lightcast Analyst, Datarun 2024.3

Approximately 60% of the Region's population resides in the City of Grande Prairie.

The Region's population accounted for 80% of the total population in Census Division 18 and Census Division 19. The population in both Census Divisions is projected to increase 2% by 2031.



AGE OF POPULATION, 2024

Region	Alberta
Prime working age (25 to 54 years)	Prime working age (25 to 54 years)
43%	43%
Young seniors and elderly (55 and over)	Young seniors and elderly (55 and over)
25%	27%

Source: Lightcast Analyst, Datarun 2024.3

HIGHEST EDUCATIONAL ATTAINMENT FOR REGION RESIDENTS, AGED 15 AND OVER, 2024

Total residents aged 15 and over	92,913
High school diploma or equivalent	33%
No certificate, diploma or degree	20%
College or non-university certificate	18%
University certificate, degree at bachelor level or above	14%

Source: Manifold Data Mining, 2024

60%

of the Region's working
age population is within
the City of Grande Prairie

LABOUR FORCE STATUS FOR REGION RESIDENTS ,
2024

Labour Force Status	Region
Total population, Residents aged 15 and over	92,913
In the labour force	68,406
Employed	63,970
Unemployed	4,436
Not in the labour force	24,507

Source: Manifold Data Mining, 2024

TOP 5 FIELDS OF STUDY FOR REGION
RESIDENTS, AGED 15 AND OVER, 2024

13,666

Architecture, Engineering,
and Related Technologies



8,233

Business, Management,
and Public Administration



6,852

Health and Related Fields



3,264

Education



3,170

Personal, Protective and
Transportation Services



Source: Manifold Data Mining, 2024

AVERAGE LABOUR FORCE PARTICIPATION RATES, 2024

PARTICIPATION RATE

74%

EMPLOYMENT RATE

69%

UNEMPLOYMENT RATE

6%

Source: Manifold Data Mining, 2024

ABOUT THE SECTOR

The health care and life sciences sector encompasses businesses dedicated to delivering health care services through diagnosis and treatment, providing residential care for medical and social needs, and offering social assistance to individuals requiring support. This sector also includes establishments involved in the manufacturing of pharmaceuticals, medicines, and medical supplies.

REGION SPECIFIC

The health care and life sciences sector has a lower concentration within the Region when compared to the rest of Alberta. However, this is one of the fastest growing sectors locally in terms of jobs. Key subsectors for this industry include dentists (78 businesses), out-patient care (66 businesses) and individual and family services (37 businesses).

Most of the the Region's businesses with employees in this sector are small enterprises, with 35% reporting employing 1-4 people. In total, the Region is home to 242 businesses within the health care and life sciences sector, representing 1% of all businesses in the Region.

HEALTH CARE AND LIFE SCIENCES BUSINESSES, JUNE 2024

Industries	Businesses
Offices of dentists	78
Out-patient care centres	66
Individual and family services	37
Residential developmental handicap, mental health and substance abuse facilities	19
Other ambulatory health care services	15
Medical and diagnostic laboratories	10
Nursing care facilities	8
Medical equipment and supplies manufacturing	3
General medical and surgical hospitals	3
Specialty (except psychiatric and substance abuse) hospitals	3
TOTAL	242

Source: Lightcast Analyst, Datarun 2024.3

REGION SPECIFIC (Cont.)

Health care and life sciences businesses in the Region employed 2,407 people in 2024, an increase of 96 positions since 2021. From 2024 to 2031 this sector is poised to see a further growth of 233 net new positions to a total of 2,640 positions in the Region. The largest percentage growth is projected for offices of dentists (25%) and other ambulatory health care services, with a projected 21% increase in total jobs.

HEALTH CARE AND LIFE SCIENCES EMPLOYED AND SELF-EMPLOYED POSITIONS, 2021, 2024 AND 2031

Subsector	2021 Positions	2024 Positions	2031 Positions	Change 24'-31'	% Change
Medical equipment and supplies manufacturing	<10	41	46	5	12%
Offices of dentists	427	565	705	140	25%
Out-patient care centres	179	285	338	53	19%
Medical and diagnostic laboratories	112	119	140	21	18%
Other ambulatory health care services	87	102	123	21	21%
General medical and surgical hospitals	139	80	0	-80	-100%
Specialty (except psychiatric and substance abuse) hospitals	310	<10	0	Insf. Data	Insf. Data
Nursing care facilities	277	269	270	1	0%
Residential developmental handicap, mental health and substance abuse facilities	195	216	235	19	9%
Individual and family services	576	728	783	55	8%
TOTAL	2,311	2,407	2,640	233	10%

Source: Lightcast Analyst, Datarun 2024.3
 Note: Job totals per subsector may not add up to total number of positions within the broader sector due to methodological rounding



Photo Courtesy of William Vavrek.



While many of the top positions within this sector are directly related to health care and life sciences, other notable occupations include receptionists. The table below highlights the top occupations based on total staffing patterns within the Region. The associated wages are provided for each occupation, irrespective of the specific sector of employment.

HEALTH CARE AND LIFE SCIENCES AVERAGE WAGES (REGARDLESS OF SECTOR OF WORK) PER OCCUPATION, 2023

Occupations	Average Wages
Nurse aides, orderlies and patient service associates	\$47,236.80
Social and community service workers	\$52,852.80
Dental assistants and dental laboratory assistants	\$60,758.09
Registered nurses and registered psychiatric nurses	\$86,611.20
Receptionists	\$54,250.80
Dental hygienists and dental therapists	\$118,596.25
Paramedical occupations	\$80,441.72
Home support workers, caregivers and related occupations	\$40,072.06
Licensed practical nurses	\$66,914.38
Therapists in counselling and related specialized therapies	\$75,909.26

Source: Lightcast Analyst, Datarun 2024.3

SECTOR DATA

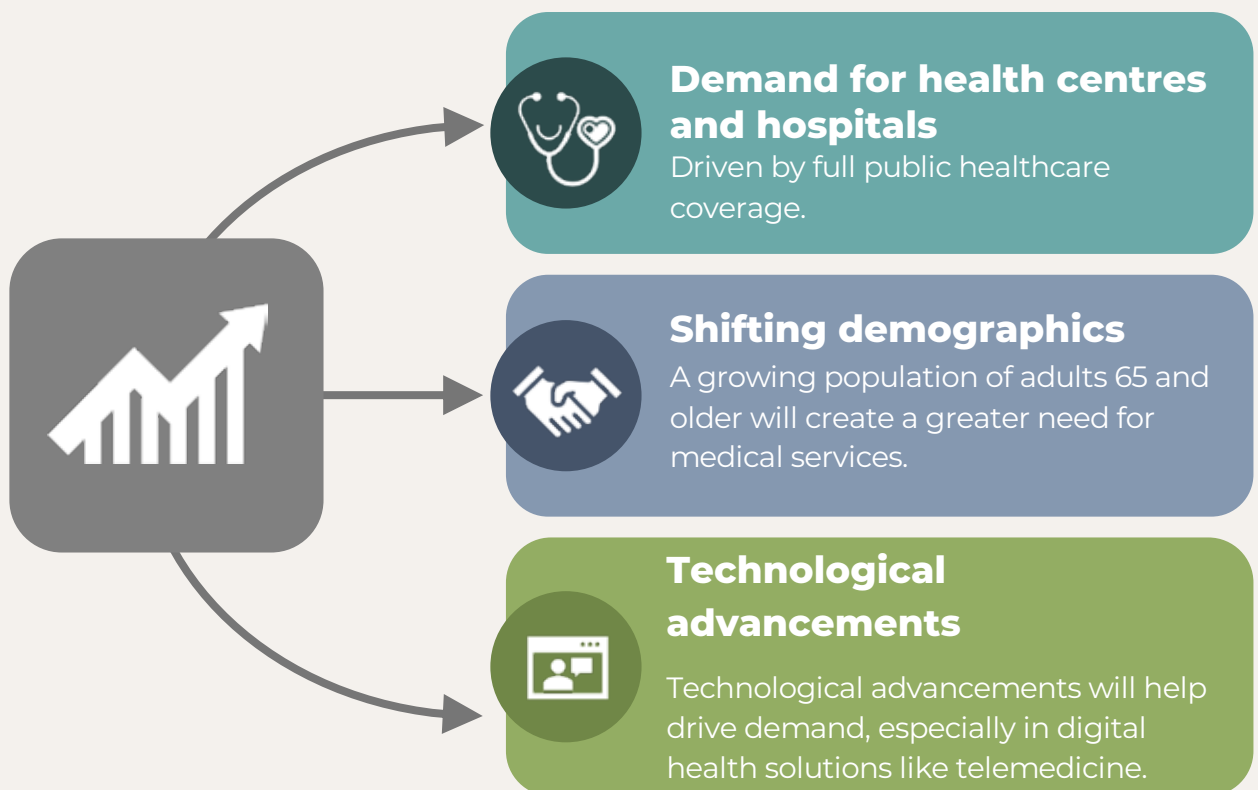
FUTURE OUTLOOK OF THE SECTOR

The healthcare sector faces a future shaped by a growing regional population and increasing demand for services, a need to attract and retain healthcare professionals, and a focus on becoming a regional hub for health services in Northwestern Alberta. Facilities continue to grow and add more services to the region.

The new Grande Prairie Regional Hospital, which opened in 2021, is a major infrastructure project that is improving access to specialized and complex care for residents in the region. There's a growing emphasis on developing rural healthcare training programs with initiatives like the Northern Alberta Medical Program.

KEY DRIVERS OF DEMAND

Factors determining national demand for the health care and life sciences can be broken into three categories.



Source: IBISWorld, 2024

KEY SUPPLIERS TO THE SECTOR



Medical instruments and supply manufacturing, and medical supply wholesalers



Pharmaceutical manufacturing, chemical manufacturing and glass product manufacturing

Source: IBISWorld, 2024

KEY BUYERS TO THE SECTOR



Hospitals and offices of physicians



Testing laboratories and engineering services.
(e.g., medical laboratories, research facilities, etc.)

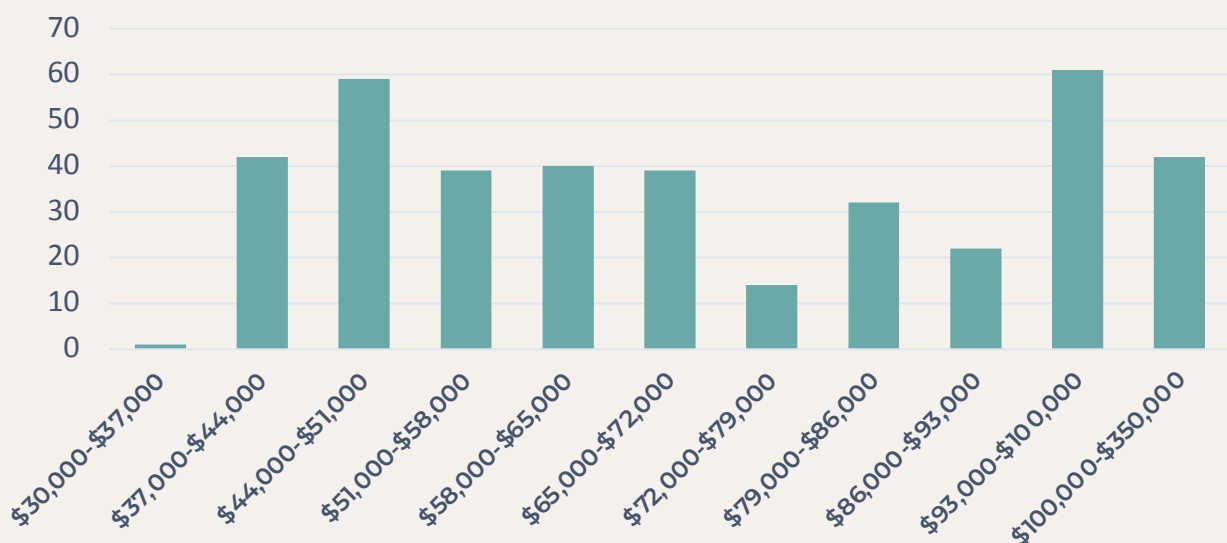
Source: IBISWorld, 2024

JOB POSTING DATA

Between January and December 2024, the Region saw 618 unique job postings within the health care and life sciences sector. Of the jobs posted during this period, 391 had advertised salaries. Those postings had a median advertised salary of \$66,300, with 26% offering a salary above \$93,000.

The top subsectors by number of job postings in the health care and life sciences are general medical and surgical hospitals; offices of dentists; and individual and family services.

JOB POSTINGS BY SALARY, JANUARY – DECEMBER 2024, REGION



Source: Lightcast Analyst, Datarun 2024.3

TOP OCCUPATIONS BY NUMBER OF JOB POSTINGS, JANUARY – DECEMBER 2024



65

Social and
community service
workers



50

Registered nurses
and registered
psychiatric nurses



46

Nurse aides,
orderlies and
patient service
associates

Source: Lightcast Analyst, Datarun 2024.3

COMMUNITY ASSETS SUPPORTING THE SECTOR/CLUSTER

Northwestern Polytechnic (NWP) offers a variety of educational options and has developed local partnerships to provide programming that rapidly and effectively meets the needs of their learners and the broader community.

nwpolytech.ca

Grande Prairie Regional Innovation Network serves innovators, entrepreneurs and companies in Northwestern Alberta with resources, knowledge and connections to launch innovations in connection with the broader Alberta innovation ecosystem.

gprin.ca

Community Futures Grande Prairie and Region offers businesses support from first steps through to growth stages. This includes information on how to start a business, developing business plans, financing loans, marketing and feasibility studies.

grandeprairie.albertacf.com

ATB Entrepreneur Centre supports businesses through business-to-business networking, connections and workshops.

atbentrepreneurcentre.com

For information on other Community and Training Assets, please contact the project partners.



REGIONAL SPOTLIGHT

The Northwestern Polytechnic (NWP) and the University of Alberta (U of A) are set to welcome the first cohort of medical students to dedicated regional and residential training centers in Grande Prairie in Fall 2025. This initiative is part of a Government of Alberta-funded strategy aimed at better serving Northern Alberta communities. U of A medical students will have the opportunity to become diverse, competent, and compassionate physician leaders right in the heart of the Peace Region.

NWP will offer collaborative medical school programming through its School of Health at the Grande Prairie campus and the adjacent Health Education Centre (HEC). The HEC, conveniently located within the new Grande Prairie Regional Hospital, is a state-of-the-art facility that provides 40,000 square feet of space for teaching, learning, research, and administration.

In response to the increasing demand for healthcare, NWP is also committed to developing new, purpose-built spaces to meet the learning needs of the future rural health workforce. The goal is to establish new medical education facilities on-campus and within NWP's expanding health education district footprint.

For more information visit https://www.nwpolytech.ca/school/health_education/

TRAINING ASSETS AND INSTITUTIONS THAT SUPPORT THE SECTOR/CLUSTER

TRAINING ASSETS SPECIFIC TO REGION



NWP has a wide array of health care sector-related degrees, diplomas or certificate programs. Students can develop skills and knowledge in various healthcare pathways including the Bachelor of Science in Nursing (BScN) program in collaboration with University of Alberta, Practical Nurse Diploma program, Kinesiology Diploma program, Health Care Aide Certificate program, and Business Administration diploma programs.. NWP also offers Collaborative University transfer programs in Sciences, Arts (Psychology and Social Work), and Kinesiology. The NWP and University of Alberta have partnered together to provide the Northern Alberta Medical Program to train the next generation of healthcare leaders at NWP's School of Health and Health Education Centre.

nwpolytech.ca



Health

(Health Care Aide Certificate, Kinesiology Diploma, and Business Administration Diplomas)



Nursing

(BScN and PN)



University Transfer

(Sciences, Arts, and Kinesiology)

TRAINING ASSETS SPECIFIC TO REGION (CONT.)

The Rupertsland Institute supports the well-being of Métis in Alberta through job matching, training partnerships with NWP, access to technology and internet, online counselling tools, information on local services, employers and careers, and self-employment workshops. rupertsland.org

Montney Riverstone Tribal Council is the service provider for the **Indigenous Skills Employment and Training (ISET) Program** in the Montney Riverstone Tribal Council area. ISET is designed to help members improve their skills and find employment through training and skills development. The program helps the community members find employment and polish employment skills. Funded through Service Canada, it gives members the skills required to find employment and fill job gaps. montneyriverstone.ca

CAREERS: The Next Generation is an industry led non-profit organization that brings together industry, schools, governments, and communities to guide youth into successful career paths. Youth get the opportunity to test drive in-demand occupations in skilled trades, forestry, information and communications technology, agriculture and healthcare. Companies benefit by attracting local talent and bringing youthful energy to their industry. careersnextgen.ca

Northern Lakes College (NLC) provides a supported distance learning environment with two locations in the Region. NLC health programs include Health Care Aide, Paramedic, and Practical Nurse. northernlakescollege.ca

For information on other Community and Training Assets, please contact the project partners.

Data Disclaimer

- The data has been rounded to the sum of all subcategories to minimize discrepancies caused by margin of error.
- The information presented in this report may not precisely match the data collected or developed by each individual community.
- To maintain privacy due to small population samples, data for some communities have been suppressed by Statistics Canada and economic modeling tools. These instances are represented with "<10".
- Occupational wages and median advertised salaries for the sector are two distinct values. Occupational wages reflect the average wage by occupation based on the latest available data (2023). In contrast, the median advertised salary represents the median value of job postings in the sector that included compensation data for the period between January and December 2024.

WORK NW ALBERTA

GRANDE PRAIRIE-GREENVIEW CORRIDOR

**MAKE A GREAT LIVING.
LIVE A GREAT LIFE.**

**CONNECT WITH US TO HELP
IDENTIFY, RECRUIT AND GROW
YOUR TALENT POOL.**



info@worknwalberta.ca



www.worknwalberta.ca



HEALTH CARE AND LIFE SCIENCES SECTOR PROFILE

WORK NW ALBERTA



Northwest Alberta (2024 Profile Summary)

Overview: This profile highlights the current state and projected growth of the health care and life sciences sector in Northwest Alberta. The region spans nearly 40,000 km² and serves a trade market of approximately 300,000 people.

KEY FACTS



Sector Employment (2024):
2,407 individuals



Projected Employment (2031):
2,640 (10% or 233 jobs)



Total Businesses:
242 (35% employ fewer than 4 people)

ECONOMIC HIGHLIGHTS

- Sector expected to grow, particularly in dental and outpatient services.
- Grande Prairie Regional Hospital and Health Education Centres supporting workforce development.

WAGES (2023 AVERAGES)

\$118,596

Dental hygienists



\$86,611

Registered nurses



\$80,442

Paramedical occupations



\$54,251

Receptionists



MAJOR SUB-SECTORS:



78

Dental
businesses



66

Out-patient
care centres



37

Individual and
family services

CHALLENGES & OPPORTUNITIES

Strong regional demand driven by aging population and technological innovation

Growth in telemedicine and digital health

Need to attract and retain professionals in rural settings

COMMUNITY & TRAINING ASSETS



Institutions:

Northwestern Polytechnic,
Northern Lakes College



Programs:

BSc Nursing, Practical Nurse,
Health Care Aide, Kinesiology



Support Networks:

GPRIN, Community Futures,
Women Building Futures, CAREERS

SPECIAL FEATURE

NWP and the U of A launched a medical training program in Grande Prairie 2025. This program features dedicated students in facilities that are fully integrated with the local hospital.

Scan for an
Audio Overview!

